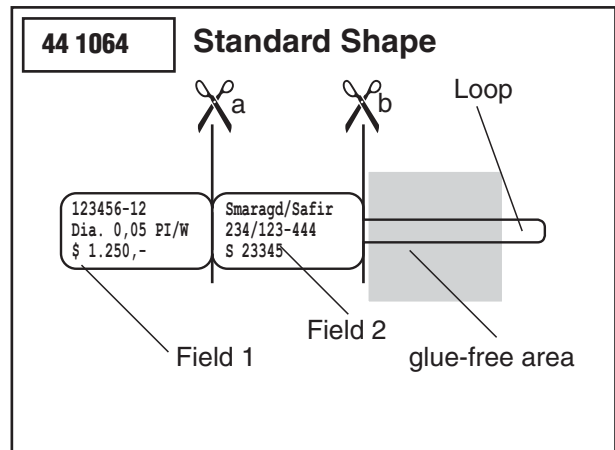
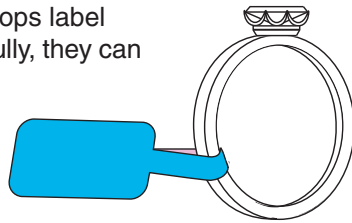


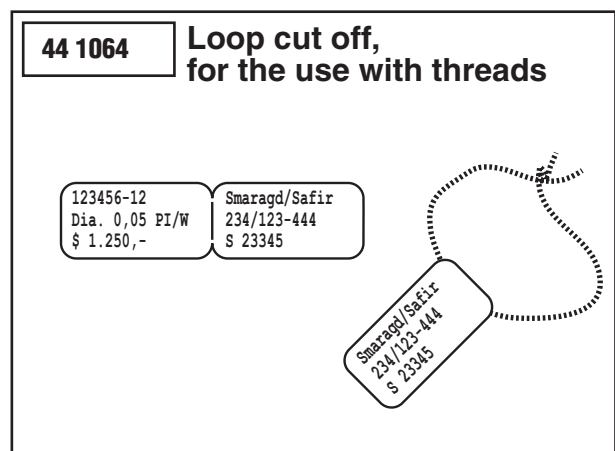
Shapes and Functions

Labels with loop

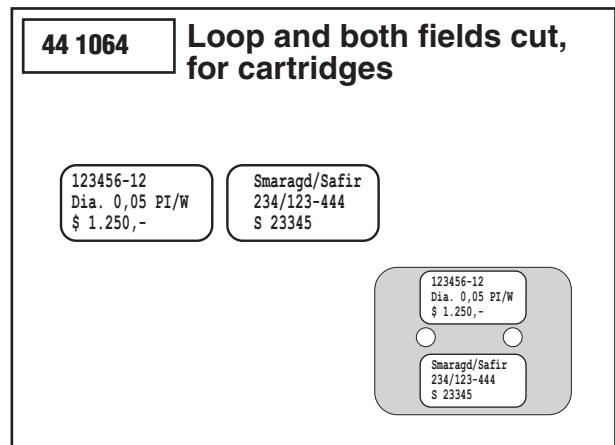
This shape is an universal solution for the needs of jewellery shops. Because jewellery shops label their items very carefully, they can cut the label with sissors for the different kinds of jewellery as mentioned below.



If the loop is cut off (b), you can use the rest of the label with pre-knotted threads. This threads are available in different colours to visualize the qualities of jewellery like 9, 14, 18 ct and silver.



Even if the label should not be attached directly at the jewellery, the loop shape can be applied. The label is trimmed at position (a) and (b) as shown above. The two separate labelling fields can now be stuck onto jewellery presentation such as pads or onto packaging etc.

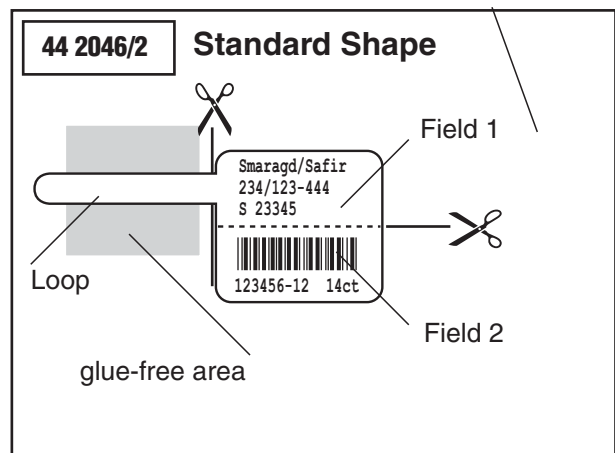


So universal, the label is the ideal solution for jewellers. They usually take great care in labelling their jewellery anyway. The application requires more time, but saves the sometimes difficult and time-consuming changing of different label shapes in the printer.

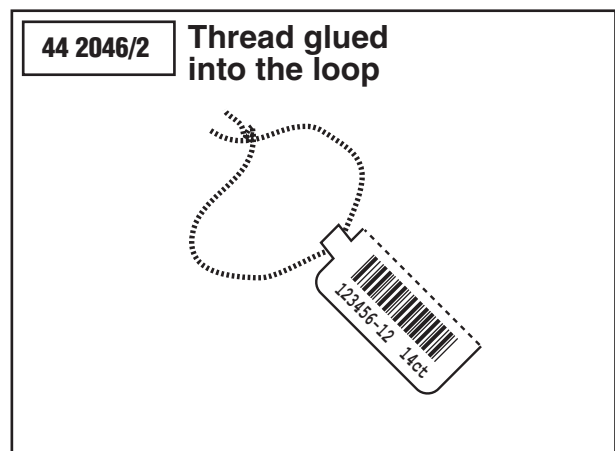
Shapes and Functions

Labels with loop

Here the classic loop shape was specially adapted to the needs of slimLINE thermal transfer printers. The decisive advantage of the loop label, its universal applicability, is of course retained.



Like the standard loop shape, the slimLINE version can also be used as a tag. A pre-knotted thread is inserted into the loop and then almost completely glued to the folded text fields



Without a loop and with separate text fields, the label can be applied as freely as its classic counterpart. Whether pads or other jewellery carriers or packaging, any flat adhesive surface is suitable for placement

